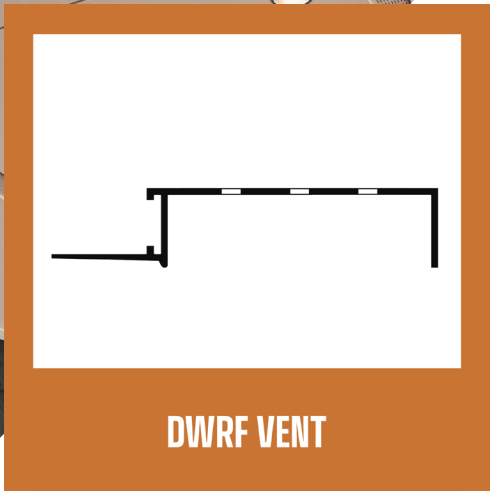
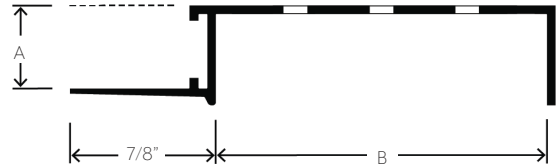


DIRECT EIFS F-MOLD VENT



DWRF VENT



APPLICATION

Flannery's Direct Application EIFS F-Mold Vents are soffit ventilated trims that can be inserted into an exterior insulation and finishing system (EIFS) soffit where the system requires a vent along a dissimilar wall or material.

SPECIFICATION

- Standard extruded aluminum alloy 6063 T5
- Typical .050" nominal wall thickness or greater
- Come in 10-foot lengths
- Stocked in Clear Anodized and Mill Finish (for field painting and priming)
- Chem-film, other factory finishes and custom paint are available

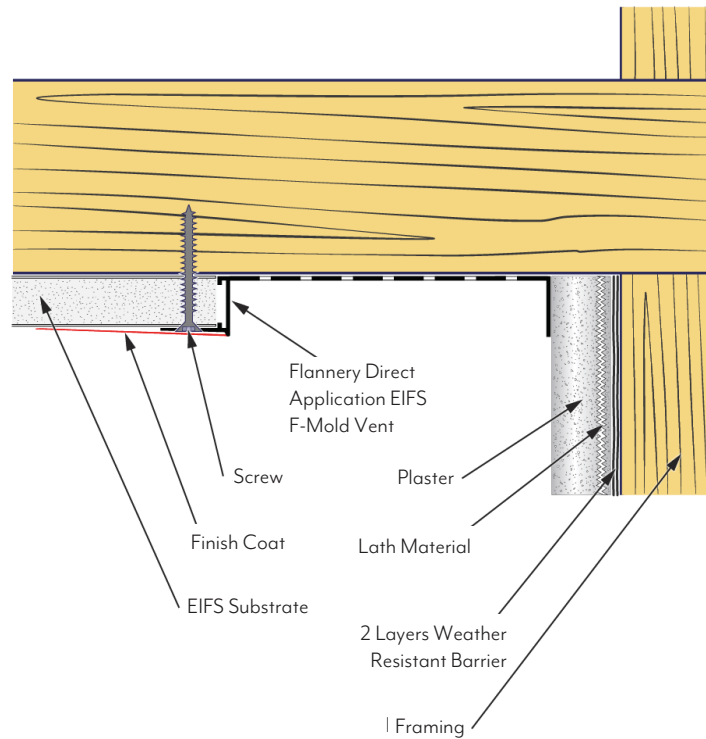
PART NO.	"A" DEPTH	"B" WIDTH	VENT SLOTS PER ROW
DWRF 50-V-50	½"	½"	1
DWRF 50-V-75	½"	¾"	1
DWRF 50-V-100	½"	1"	1
DWRF 50-V-150	½"	1 ½"	2
DWRF 50-V-200	½"	2"	3
DWRF 50-V-300*	½"	3"	5
DWRF 50-V-600*	½"	6"	9
DWRF 625-V-50	⅝"	½"	1
DWRF 625-V-625	⅝"	⅝"	1
DWRF 625-V-75	⅝"	¾"	1
DWRF 625-V-100	⅝"	1"	1
DWRF 625-V-150	⅝"	1 ½"	2
DWRF 625-V-200	⅝"	2"	3
DWRF 625-V-300*	⅝"	3"	5
DWRF 625-V-400*	⅝"	4"	7

*Indicates Modified Part

DIRECT EIFS F-MOLD VENT

INSTALLATION DETAIL

Attach Direct Application EIFS F-Mold Vents to the framing with nails, screws, or other approved fastening methods. Flannery's Aluminum Soffit Vents are also available with bug screen upon request.



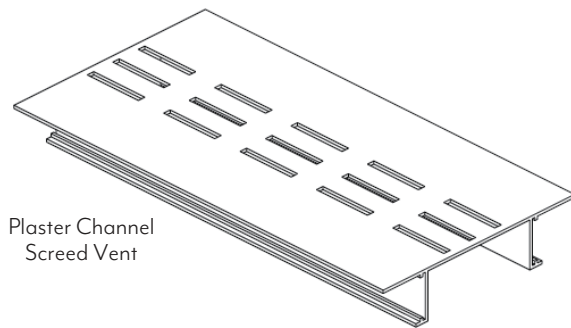
SOFFIT VENTILATION SPECIFICATIONS

VENT AREA GRAPH

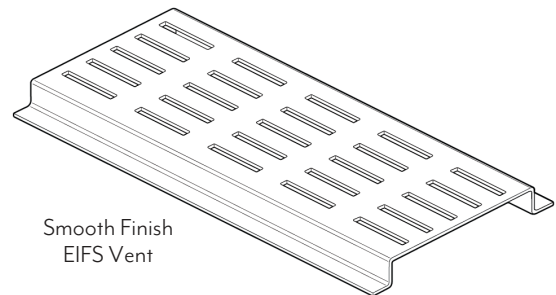
REVEAL WIDTH	VENT SLOTS PER ROW	VENT AREA PER FOOT
1/2"	1	1" Sq.
5/8"	1	1" Sq.
3/4"	1	1" Sq.
7/8"	1	1" Sq.
1"	1	1" Sq.
1 1/2"	2	2" Sq.
2"	3	3" Sq.
2 1/2"	3	3" Sq.
3"	5	5" Sq.
4"	7	7" Sq.
6"	9	9" Sq.

It is possible to punch Vent Slots into many of Flannery's Trims, thus providing the needed ventilation for any project. All Vent Slots are 1/8" wide and 1" long. Vent Slots are configured at 1/2" on center lengthwise and 1/2" on center laterally. Each row of Vent Slots lengthwise provides approximately one-square inch of vented area per lineal foot (see Vent Area Graph). All of Flannery's Vented Trims are available with a charcoal fiberglass bug screen to prevent insects from entering the soffit area through the vent slots. Bug screen is available upon request at an additional cost.

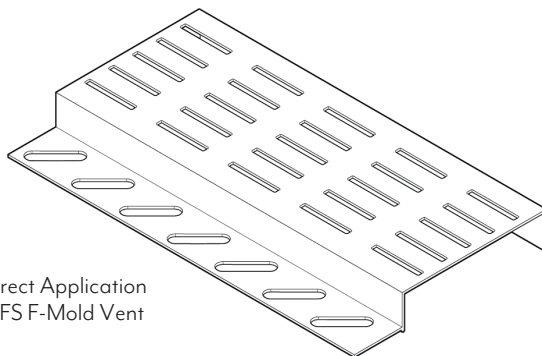
Flannery manufactures ventilated trims for a number of soffit systems including, Plaster, EIFS, Exterior Gypsum Board and Wood Paneling. Attach Vent Screeds to the framing with nails, screws, or other approved fastening methods. All Vent Screeds must be cut accurately and installed with tight, neat joints. Please specify Flannery Product Code along with the phrase "with Vent" (i.e. "PCS 75-V-200 with Vent") when ordering Vent Screeds.



Plaster Channel
Screed Vent



Smooth Finish
EIFS Vent



Direct Application
EIFS F-Mold Vent

GENERAL SPECIFICATIONS FOR FLANNERY TRIM

PRODUCT SPECIFICATIONS

Flannery recommends that any installer of our Aluminum Trims properly layout and coordinate the installation of trims along with materials that will be utilized in the installation of the exterior wall system.

FLANNERY ALUMINUM TRIM ALLOY & COMPOSITION

Flannery's Aluminum Trims are standard extruded aluminum alloy 6063 T5 and have a typical .050" or greater nominal wall thickness. Extruded Aluminum Trims are aesthetic trims which are not intended to hold or support the full weight of any Panel, Stucco, or Plaster system. Flannery's Trims meet or exceed ASTM B221 for extruded aluminum products.

Flannery's Aluminum Trims come in 10' lengths typically and shall have a standard stock finish of Mill Finish (for field priming & painting) or Clear Anodized (some may be stocked in Black Anodized). Other factory finishes including liquid or powder coated paint, Chem-Film, Primer and special Anodizing finishes are available. All of our other finishing options can be viewed on the next page.

HANDLING ALUMINUM TRIMS

Personal protection equipment should be utilized when handling and installing aluminum trims. Gloves and eye protection must be worn when handling aluminum trims as well as ear protection when cutting.

CUTTING ALUMINUM MOLDINGS

Flannery recommends that ten-foot lengths be used wherever possible. Aluminum Moldings can be cut with a chop saw, using a 125-150-tooth carbide-tip blade for non-ferrous metal. An abrasive cut-off wheel should not be used to cut aluminum trims. Blade lubricant (WD-40 or grease stick) must be applied to the blade before each cut. Lubricant should be cleaned from the trim prior to installation.

STEPS FOR FIELD PAINTING MILL FINISH (RAW) ALUMINUM MOLDINGS

1. Clean and treat moldings in accordance with the paint manufacturer's specifications.
2. Use a primer recommended by the paint manufacturer's specifications.
3. Apply the paint coat according to the paint manufacturer's specifications.
4. Flannery makes no guarantees, nor accepts any responsibility, for the performance of field-applied coatings over anodized finishes.
5. If aluminum trim has an alternate finish, contact Flannery for field painting instructions.

PLEASE NOTE

This product sheet presents general guidelines and suggestions for the installation of Flannery trims and products. The purpose of these general guidelines and suggestions is to aid in a successful interior or exterior finish based on the Uniform Building Code and industry standards. No one catalog or product guide can address all of the unique specifics or installation details that occur from one project to another. Flannery recommends that every installer be familiar, or become acquainted with, common interior or exterior trim installation practices before installing any of Flannery's many trims and products. Flannery also recommends that the specifying architect, engineer, and general contractor be consulted with as well.