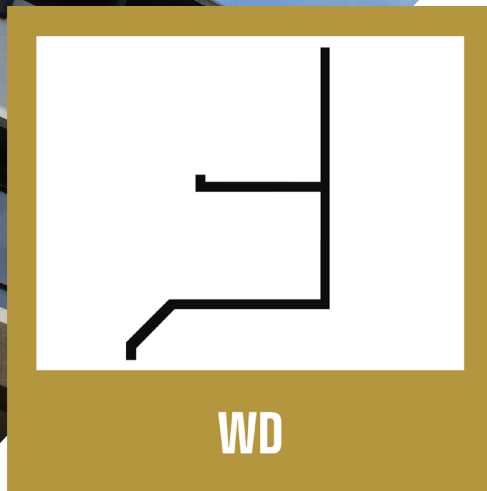


# WINDOW DRIP CAP REVEAL

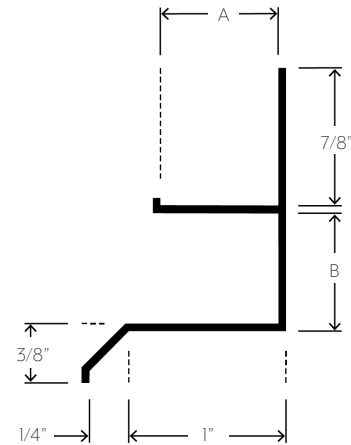


## APPLICATION

Flannery's Door & Window Drip Cap Reveal creates an aesthetic termination reveal in any stucco wall system over a door or window opening. Typically installed where a stucco wall terminates at the top of a door or window, the Door & Window Drip Cap Reveal is a stucco stop with a built-in drip leg that caps the top of doors and windows.

## SPECIFICATION

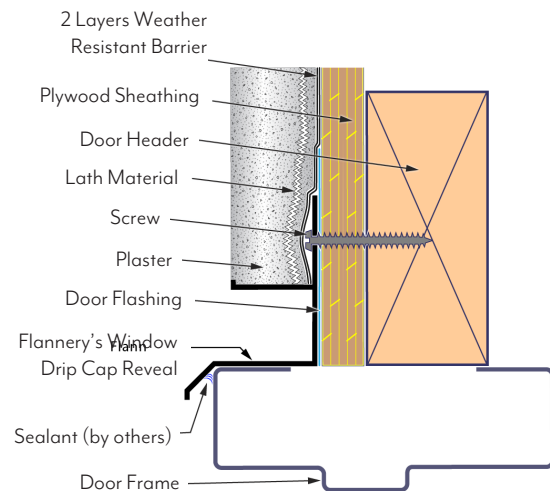
- Standard extruded aluminum alloy 6063 T5
- Typical .050" nominal wall thickness or greater
- Come in 10-foot lengths
- Stocked in Clear Anodized and Mill Finish (for field painting and priming)
- Chem-film, other factory finishes and custom paint are available



PART NO.	"A" DEPTH	"B" WIDTH
WD 75-75	3/4"	3/4"

## INSTALLATION DETAIL

Attach Window Drip Cap Reveals over the door or window to the framing with nails, screws, or other approved fastening methods. The next horizontal layer of building paper or weather resistant barrier must be installed over the attachment flange of the Drip Cap. All window drips must be cut accurately and installed with tight neat joints. A bead of sealant must be installed between the bottom drip edge of the Drip Cap and the top of the window frame.



# SPECIFICATIONS FOR PLASTER & STUCCO TRIMS

## INSTALLATION INSTRUCTIONS FOR EXTERIOR REVEAL MOLDINGS INSTALLED HORIZONTALLY

1. Building paper must be placed behind all moldings and have a shiplap of at least 2”.
2. Attach moldings 16” or 24” on center to framing using approved fastening methods. Butt joints must be cut accurately and sealed.
3. Install lath over installation flanges of all moldings.
4. Mask all reveals prior to plastering. Use cloth or vinyl tape specifically manufactured for masking anodized aluminum moldings. For painted moldings, use vinyl tape.

## INSTALLATION INSTRUCTIONS FOR WEEP, DOOR & WINDOW OR SOFFIT DRIP SCREEDS

Weep Screeds, Door & Window Drips or Soffit Drip Screeds should be installed per the architect or building engineer’s installation instructions.

Flannery recommends the following steps to help assist the installer in maximizing these trims’ main purpose, which is water management:

1. Before Flannery’s weeping trims are installed, required waterproofing for door and window openings should be inspected and evaluated for proper installation.
2. All Weep or Drip Screeds should be attached horizontally 16” or 24” on center to framing using approved fastening methods. Butt joints must be cut accurately and sealed.
3. Building paper or the weather resistant barrier should then be installed over the corresponding attachment flanges to prevent moisture from getting in behind the trim.
4. Install lath over the corresponding attachment flanges of the molding.
5. If the trim has a reveal, use cloth or vinyl tape specifically manufactured for masking anodized aluminum moldings prior to plastering. For painted moldings, use vinyl tape.

# GENERAL SPECIFICATIONS FOR FLANNERY TRIM

## PRODUCT SPECIFICATIONS

Flannery recommends that any installer of our Aluminum Trims properly layout and coordinate the installation of trims along with materials that will be utilized in the installation of the exterior wall system.

## FLANNERY ALUMINUM TRIM ALLOY & COMPOSITION

Flannery's Aluminum Trims are standard extruded aluminum alloy 6063 T5 and have a typical .050" or greater nominal wall thickness. Extruded Aluminum Trims are aesthetic trims which are not intended to hold or support the full weight of any Panel, Stucco, or Plaster system. Flannery's Trims meet or exceed ASTM B221 for extruded aluminum products.

Flannery's Aluminum Trims come in 10' lengths typically and shall have a standard stock finish of Mill Finish (for field priming & painting) or Clear Anodized (some may be stocked in Black Anodized). Other factory finishes including liquid or powder coated paint, Chem-Film, Primer and special Anodizing finishes are available. All of our other finishing options can be viewed on the next page.

## HANDLING ALUMINUM TRIMS

Personal protection equipment should be utilized when handling and installing aluminum trims. Gloves and eye protection must be worn when handling aluminum trims as well as ear protection when cutting.

## CUTTING ALUMINUM MOLDINGS

Flannery recommends that ten-foot lengths be used wherever possible. Aluminum Moldings can be cut with a chop saw, using a 125-150-tooth carbide-tip blade for non-ferrous metal. An abrasive cut-off wheel should not be used to cut aluminum trims. Blade lubricant (WD-40 or grease stick) must be applied to the blade before each cut. Lubricant should be cleaned from the trim prior to installation.

## STEPS FOR FIELD PAINTING MILL FINISH (RAW) ALUMINUM MOLDINGS

1. Clean and treat moldings in accordance with the paint manufacturer's specifications.
2. Use a primer recommended by the paint manufacturer's specifications.
3. Apply the paint coat according to the paint manufacturer's specifications.
4. Flannery makes no guarantees, nor accepts any responsibility, for the performance of field-applied coatings over anodized finishes.
5. If aluminum trim has an alternate finish, contact Flannery for field painting instructions.

## PLEASE NOTE

*This product sheet presents general guidelines and suggestions for the installation of Flannery trims and products. The purpose of these general guidelines and suggestions is to aid in a successful interior or exterior finish based on the Uniform Building Code and industry standards. No one catalog or product guide can address all of the unique specifics or installation details that occur from one project to another. Flannery recommends that every installer be familiar, or become acquainted with, common interior or exterior trim installation practices before installing any of Flannery's many trims and products. Flannery also recommends that the specifying architect, engineer, and general contractor be consulted with as well.*